



# Aliva®-302.1 Spraying arm

## ■ For mining and small tunnels

The Aliva®-302.1 spraying arm is perfect for working in mines or small tunnels. If space is limited the height can be custom reduced. With the spraying arm shotcrete can be applied quickly and efficiently.

## ■ Modular concept

The spraying arm Aliva®-302.1 Standard comes with hydraulic aggregate, control system, incl. cable remote control and headlights. If your carrier vehicle is already equipped with any of these components, the version can be modularly adapted.

## ■ Easy mounting on carrier vehicle

The Aliva®-302.1 spraying arm can be easily mounted onto your carrier vehicle. Special mounting screws are in the delivery included. The Standard version only requires an external power supply for operation. For this connect the base version with the hydraulic and the control voltage of the carrier vehicle.

# Aliva<sup>®</sup>-302.1 Spraying arm

## ADVANTAGES AND BENEFITS

- Easy assembly
- Easy handling
- Easy maintenance
- Up to 15m<sup>3</sup>/h (DN65)

## STANDARD EQUIPMENT

- Control system
- Remote control (15m cable)
- Hydraulic aggregate
- Valve block
- Mounting screws

## OPTIONS

- Radio control
- Head lights 2x460W
- Powered with compressed air
- Other accessories such as Converto Robo Spray, admixture-/air hose are listed in the Aliva<sup>®</sup> Converto spare parts catalog

## Technical data sheet

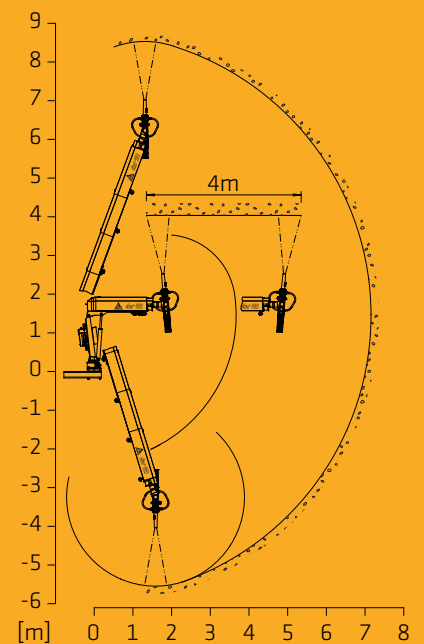
### Spraying arm

<b>Typ of drive</b>	Hydraulic
<b>Max. oil pressure</b>	210 bar ±5 bar
<b>Required Oil flow</b>	min.28 l/min max.40 l/min
<b>Boom extension</b>	3m
<b>Pivoting range</b>	360°
<b>Raise/lower range</b>	±70°
<b>Rotation Sprayhead</b>	Axial 360°
	Radial 240°
	Nozzle rotation
<b>Transport Dimension incl. power pack mm</b>	length 2260
	height 1290
	width 1300
<b>Weight</b>	580 kg

### Power Pack

<b>Typ of drive</b>	Electric motor
<b>Oil pressure</b>	210 bar ±5 bar
<b>Oil flow</b>	28 l/min
<b>Motor power</b>	9 kW
<b>Fuse</b>	32 A
<b>Voltage</b>	380-480 V 50/60 Hz
<b>Protection class</b>	IP 65
<b>Tank contents</b>	75 Liter
<b>Dimension mm</b>	length 755
	height 1110
	width 400
<b>Weight (empty)</b>	220 kg

### Working area



Prior to use or processing, always consult the current product data sheet of the products used. The current version of our respective General Terms and Conditions applies.

### Aliva<sup>®</sup>-302.1 on Aliva<sup>®</sup>-503.3



### Aliva<sup>®</sup>-302.1 on a truck



**SIKA SCHWEIZ AG**  
Aliva Equipment  
Tüffenwies 16  
CH-8048 Zürich  
Switzerland

**Contact**  
Telefon +41 58 436 32 22  
Fax +41 58 436 41 40  
www.aliva-equipment.com  
aliva.equipment@ch.sika.com

**aliva**

**BUILDING TRUST**

